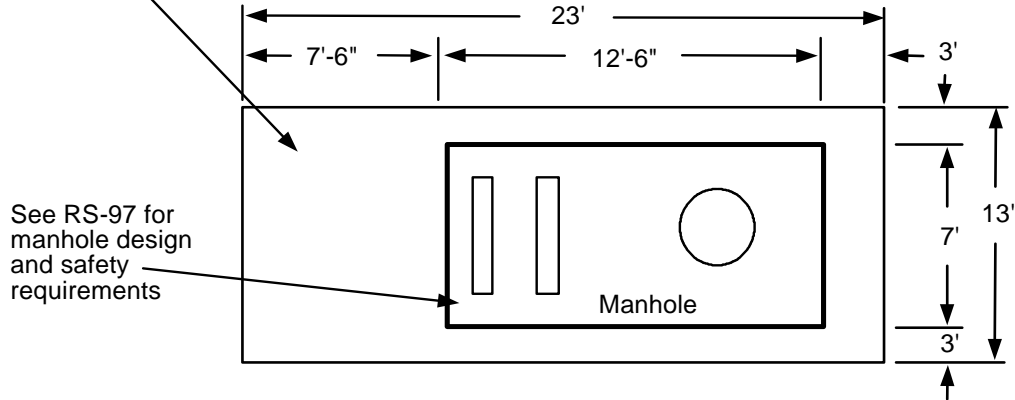


RS-111: 25 KV MANHOLE PAD, NOT ADJACENT TO PUBLIC R.O.W.

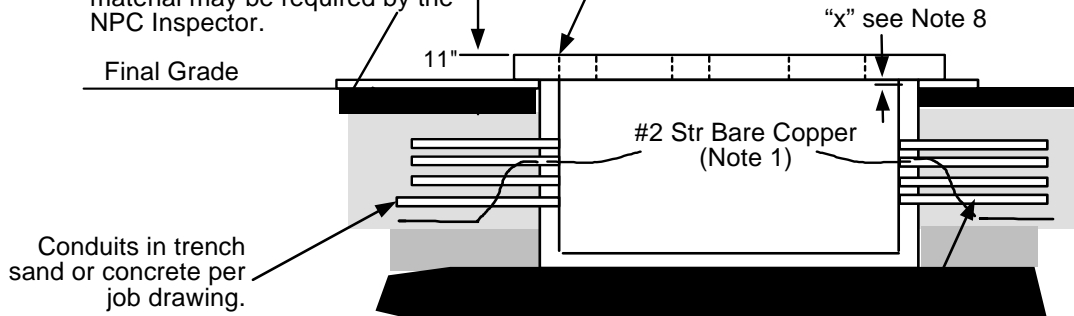
INSTALLATION REQUIREMENTS

A 4" thick concrete slab is required when the equipment pad is located in a grassy area, planter, or bare ground. The slab must be finished to final grade and constructed per RS-G6.

APPROVED STRUCTURES	
MANUFACTURER	MANHOLE
Jensen Precast	J-RS-97
Rockway Precast	R-RS-97




4" Type II base 90% compacted under slab. Additional base material may be required by the NPC Inspector.




12" Type II base 90% compacted under manhole. Compaction testing and results required at the discretion of the NPC Inspector. Additional base material may be required by the NPC Inspector.

Conduits must be installed from the bottom up. The first conduit goes into space 1, the second into space 2, etc. The designer avoid designs where future cable will be pulled in under existing energized cable. The manhole will be rejected by the NPC Inspector if the conduits are not found in the correct locations.

REV	REVISION RECORD	ENGR BY:	APPD BY:	DATE
5
4
3
2
1	New Format	DH	DA	12/06

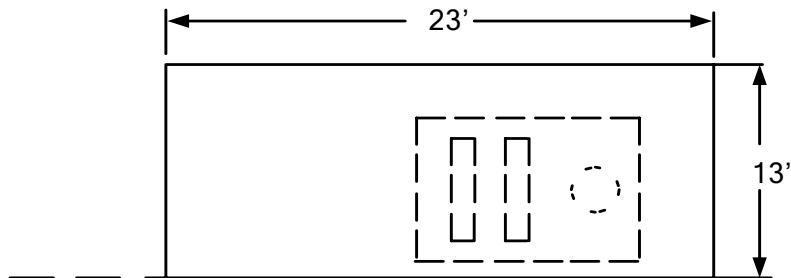

T&D STANDARDS
NEVADA POWER COMPANY
ELECTRIC SERVICE REQUIREMENTS

RS-111 25 kV Manhole Pad
Not Adjacent to Public R.O.W.


DI: ESRNPC-RS111-REV01	SHEET 1 OF 2	
SCALE: NONE		

NOTES:

1. Grounding by customer shall be 2-50' #2 stranded bare copper ground wires laid in the bottom of the conduit trench in opposite directions with 2-5' tails left in the box.
2. For location and clearances to other structures, see RS-5.
3. Retaining wall required when grade from bottom of pad rises or lowers more than 1' in 5' horizontally or when required by developer as perimeter wall
4. Required easement, (conduit may require As-Built easement):



5. If the designer specifies additional conduit openings, the contractor shall core drill the holes as required.
6. The bottom surface of the manholes shall be level.
7. If the ground water level is at least 3' below the bottom of the pull box, the 2" diameter knockout in the sump pump recess shall be removed.
8. If any final grade adjustment "x" is needed, take the following action:
 - a) 0"-6" -The top of the pad has to clear the final grade 11" to min. 5".
 - b) 6"-24"-The NPC contractor shall order an extension from the original manufacturer.
 - c) Above 24" -Any extension exceeding 24" shall be subject to T & D Standards approval.
 - d) If bottom of the manhole pad is located 1" to 24" above final ground level, the NPC contractor shall make a concrete collar that fills the space under the outside dimensions of the pad.
 - e) If bottom of the manhole pad is located more than 24" above or below ground level, the proposed adjustment shall be subject to T & D Standards approval.
9. This manhole may be installed next to sidewalks, but never under traffic areas. For heavy frequency traffic areas, (e.g. streets, roads, etc.) use the RS-94 manhole.

		T&D STANDARDS NEVADA POWER COMPANY ELECTRIC SERVICE REQUIREMENTS	
RS-111 25kV Manhole Pad Not Adjacent to Public R.O.W.			
DI: ESRNPC-RS111-REV01		SHEET	1
SCALE: NONE		INITIAL ISSUE	DATE: 12/27/2006
		2 OF 2	