

RS-13: RESIDENTIAL TRANSFORMER PAD, ONE 1 PH, 12/25KV, PHASE TO NEUTRAL

DESIGN REQUIREMENTS

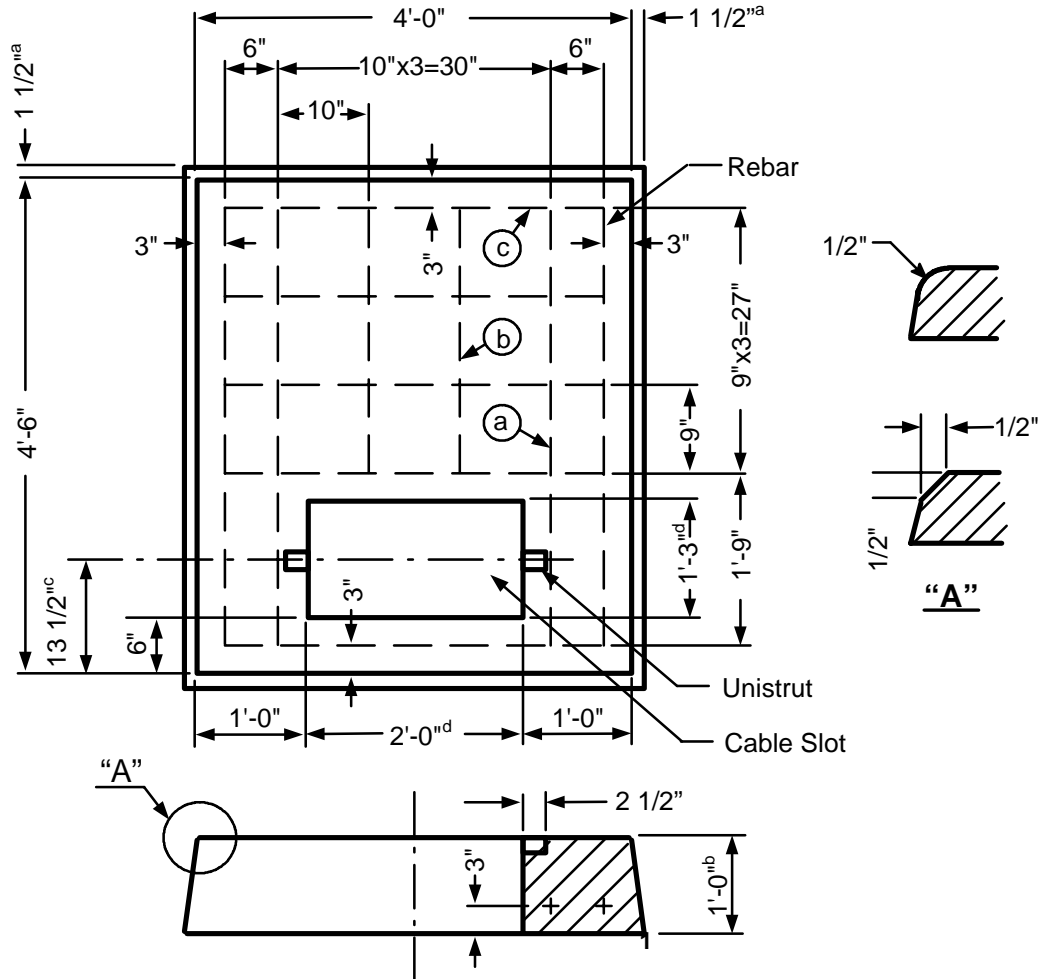
TOLERANCES:

a = +0", -1 1/2"
 b = +1/4", -0"
 c = +1/2", -1/2"
 d = +1/2", -0"

REBAR SCHEDULE:

(a) = 4 ea. 48"
 (b) = 2 ea. 27"
 (c) = 5 ea. 42"

APPROVED STRUCTURE	
MANUFACTURER	PAD
Jensen Precast	J-RS-13
Rockway Precast	R-RS-13



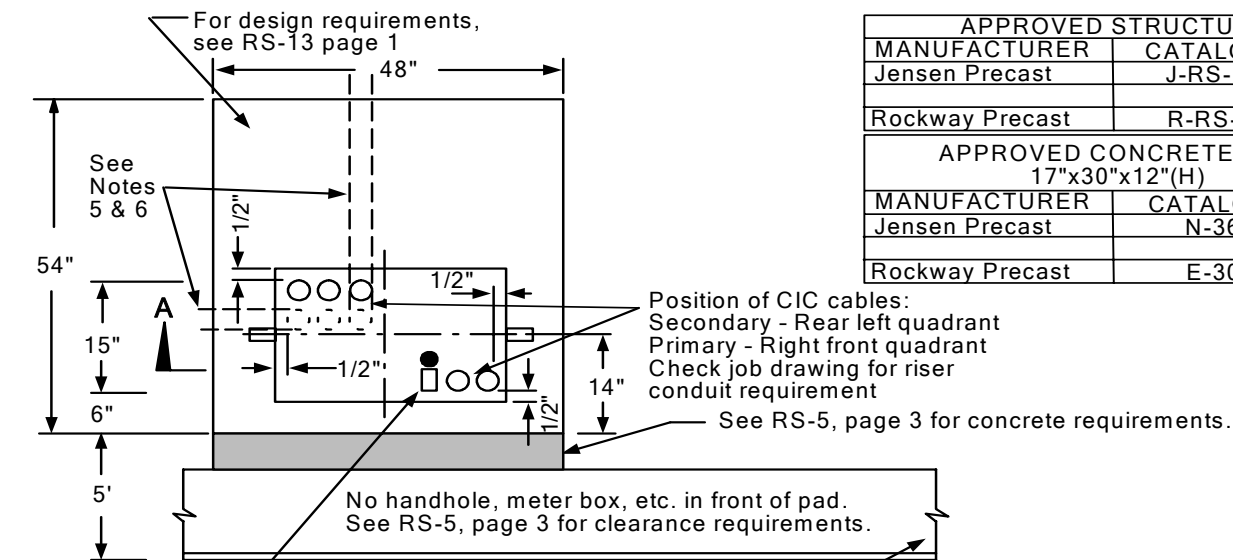
RS-13, RS-19, AND RS-28 TRANSFORMER PADS

NOTES:

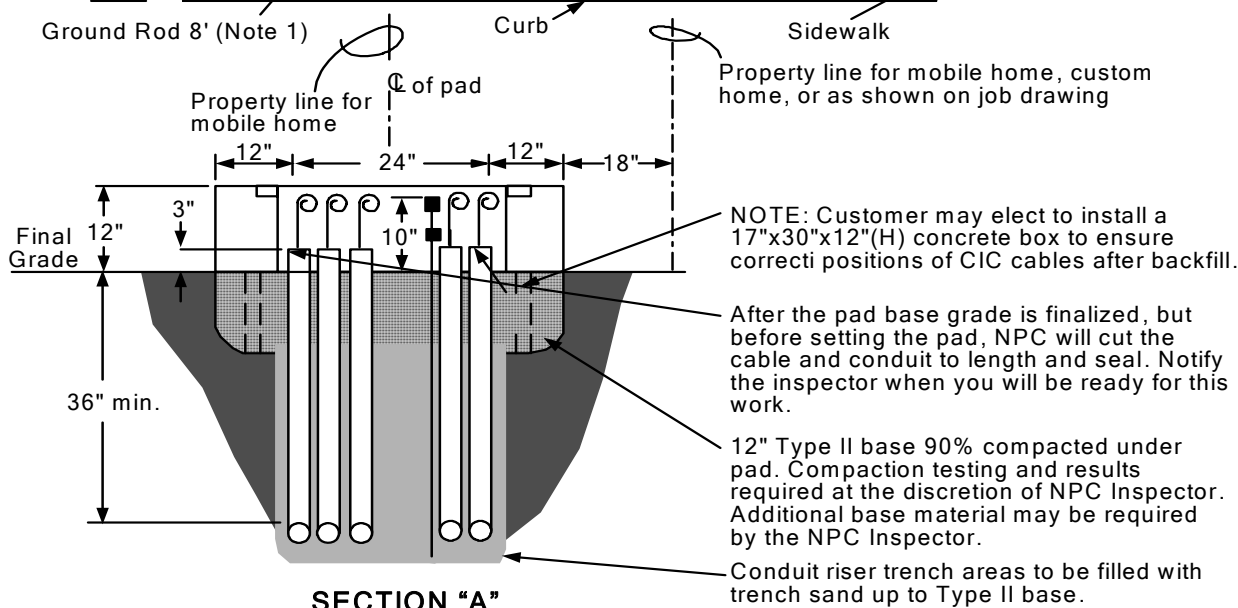
1. Rebar shall be a minimum #4 and placed into the above drawing according to the rebar schedules.
2. Pad unistruts shall be hot dip galvanized steel type P2000HG x 2-1/2".
3. Pad cable slot shall be 15" x 24".
4. Pad shall meet RS-G2 and RS-G3.

REV	REVISION RECORD	ENGR BY:	APPD BY:	DATE	T&D STANDARDS NEVADA POWER COMPANY ELECTRIC SERVICE REQUIREMENTS				
5	RS-13 Residential Transformer Pad One 1 Ph, 12 or 25kV, Phase to Neutral				
4	.	.	.						
3					
2					
1	New Format	DH	DA	9/06	DI: ESRNPC-RS013-REV01	SCALE: NONE	INITIAL ISSUE DATE: 09/27/2006	SHEET 1 OF 2	

INSTALLATION REQUIREMENTS



APPROVED STRUCTURE	
MANUFACTURER	CATALOG NO.
Jensen Precast	J-RS-13
Rockway Precast	R-RS-13
APPROVED CONCRETE BOX 17"x30"x12"(H)	
MANUFACTURER	CATALOG NO.
Jensen Precast	N-36
Rockway Precast	E-30



NOTES:

1. Ground rod per UT-113 or UT-213 by NPC.
2. For additional location and clearance requirements to other structures, see RS-5.
3. Retaining wall required when grade from bottom of pad rises or lowers more than 1' in 5' horizontally.
4. Telephone and cable TV ground wires and clamps shall be installed by them.
5. 3" stubouts must be installed for future homes. Stubouts must clear pad by 6". Depth marker must be installed to locate 3" stubout.
6. 4" DB 60 PVC for 500 kcmil triplex, if required.
7. Stubouts for future services must be placed in front of other services.
8. The top of the pad shall be leveled and must clear the final grade by 12".

T&D STANDARDS NEVADA POWER COMPANY ELECTRIC SERVICE REQUIREMENTS	
RS-13 Residential Transformer Pad One 1 Ph, 12 or 25kV, Phase to Neutral	
DI: ESRNPC-RS013-REV01	SHEET 2 OF 2
SCALE: NONE	INITIAL ISSUE DATE: 09/27/2006