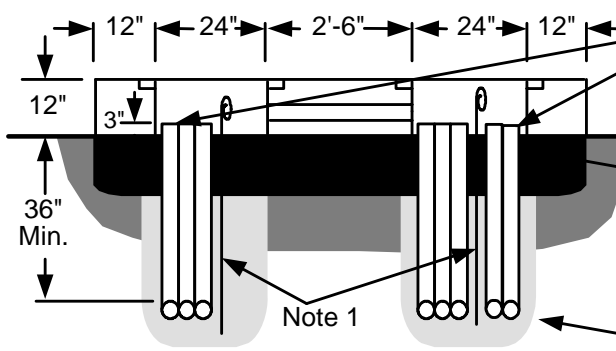
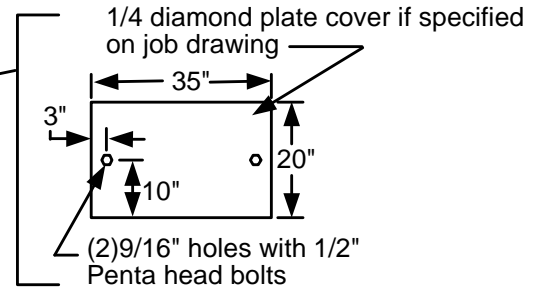
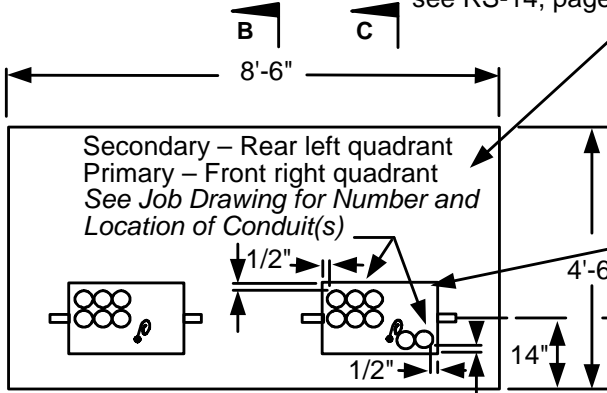


RS-20: COMMERCIAL TRANSFORMER PAD, TWO 1PH, 12 OR 25KV

INSTALLATION REQUIREMENTS

For design requirements, see RS-14, page 1

APPROVED PRECAST PAD	
MANUFACTURER	PAD
Jensen Precast	J-RS-14
Rockway Precast	R-RS-14



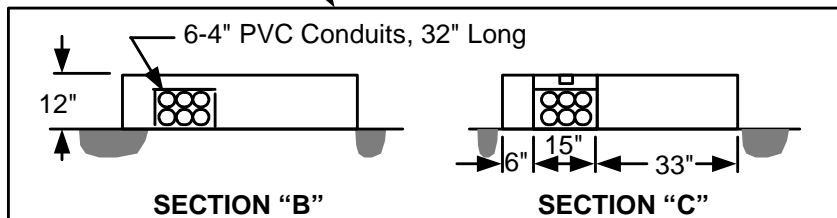
See RPI-G (NPC Requirements for Customer Owned Service Cables, page 9) for conductor and terminal requirements.

Final Grade
12" Type II base 90% compacted under pad. Compaction testing and results required at the discretion of NPC Inspector. Additional base material may be required by the NPC Inspector.

Conduit riser trench areas to be filled with trench sand up to Type II base.

SECTION "A"

See Note 4



SECTION "B"



SECTION "C"

NOTES:



1. Grounding by customer shall be 2 - 50' #2 stranded bare copper ground wires laid in the bottom of the conduit trench in opposite directions with 2 - 5' tails in the pad opening.

NOTE: Only at the discretion of NPC's inspectors, a 1/2" x 8' copper ground rod can be installed.

2. For location and clearances to other structures, see: RS-5.
3. Retaining wall required when grade from bottom of pad rises or lowers more than 1' in 5' horizontally.
4. Sections "B" and "C" are for pour-in-place pads only.
5. The top of the pad shall be leveled and must clear the final grade by 12".

REV	REVISION RECORD	ENGR BY:	APPD BY:	DATE	T&D STANDARDS NEVADA POWER COMPANY ELECTRIC SERVICE REQUIREMENTS			
5	 RS-20 Commercial Transformer Pad Two 1Ph, 12 or 25kV			
4	.	.	.					
3				
2				
1	New Format	DH	DA	11/06	DI: ESRNPC-RS020-REV01	NONE	INITIAL ISSUE DATE: 11/20/2006	
							SHEET 1 OF 2	

THIS PAGE INTENTIONALLY LEFT BLANK

		T&D STANDARDS NEVADA POWER COMPANY ELECTRIC SERVICE REQUIREMENTS	
RS-20 Commercial Transformer Pad Two 1Ph, 12 or 25 kV			
DI: ESRNPC-RS020-REV01		SHEET 2 OF 2	
SCALE: NONE	INITIAL ISSUE DATE: 11/20/2006		