

RS-21: COMMERCIAL TRANSFORMER PAD, THREE 1PH, 12 OR 25 KV

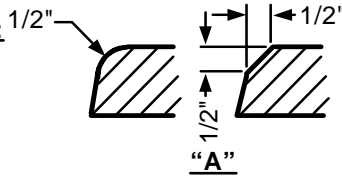
DESIGN REQUIREMENTS

TOLERANCES:

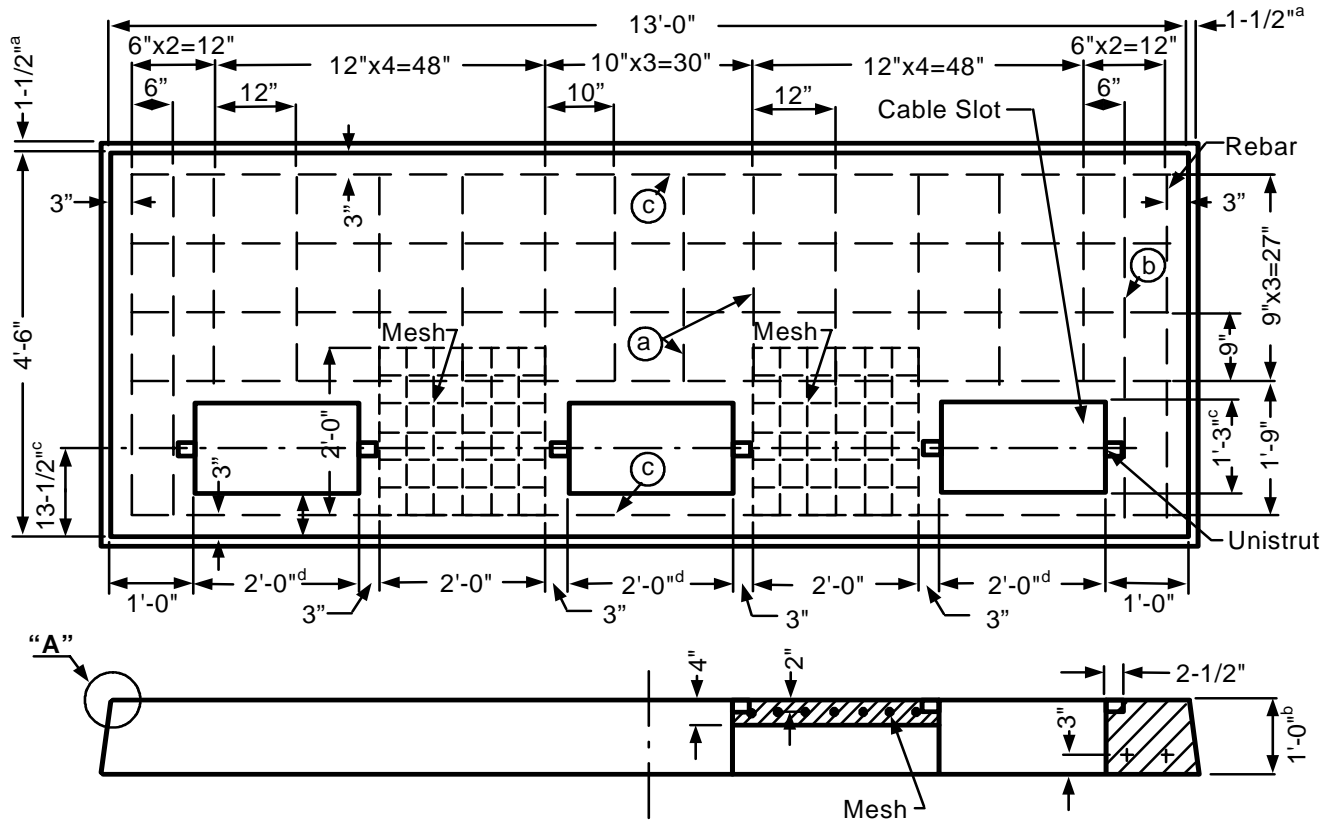
a = +0", -1 1/2"
 b = +1/4", -0"
 c = +1/2", -1/2"
 d = +1/2", -0"

REBAR SCHEDULE:

(a) = 12 ea. 27"
 (b) = 4 ea. 48"
 (c) = 5 ea. 150"




APPROVED PRECAST PAD	
MANUFACTURER	PAD
Jensen Precast	J-RS-21
Rockway Precast	R-RS-21



RS-21 TRANSFORMER PAD

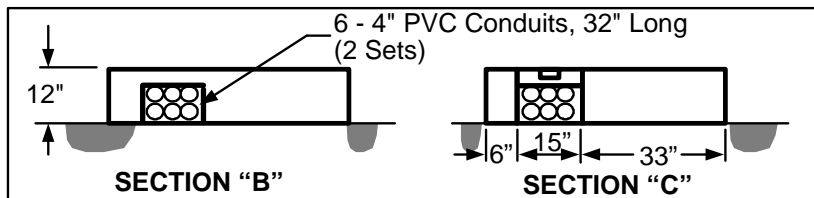
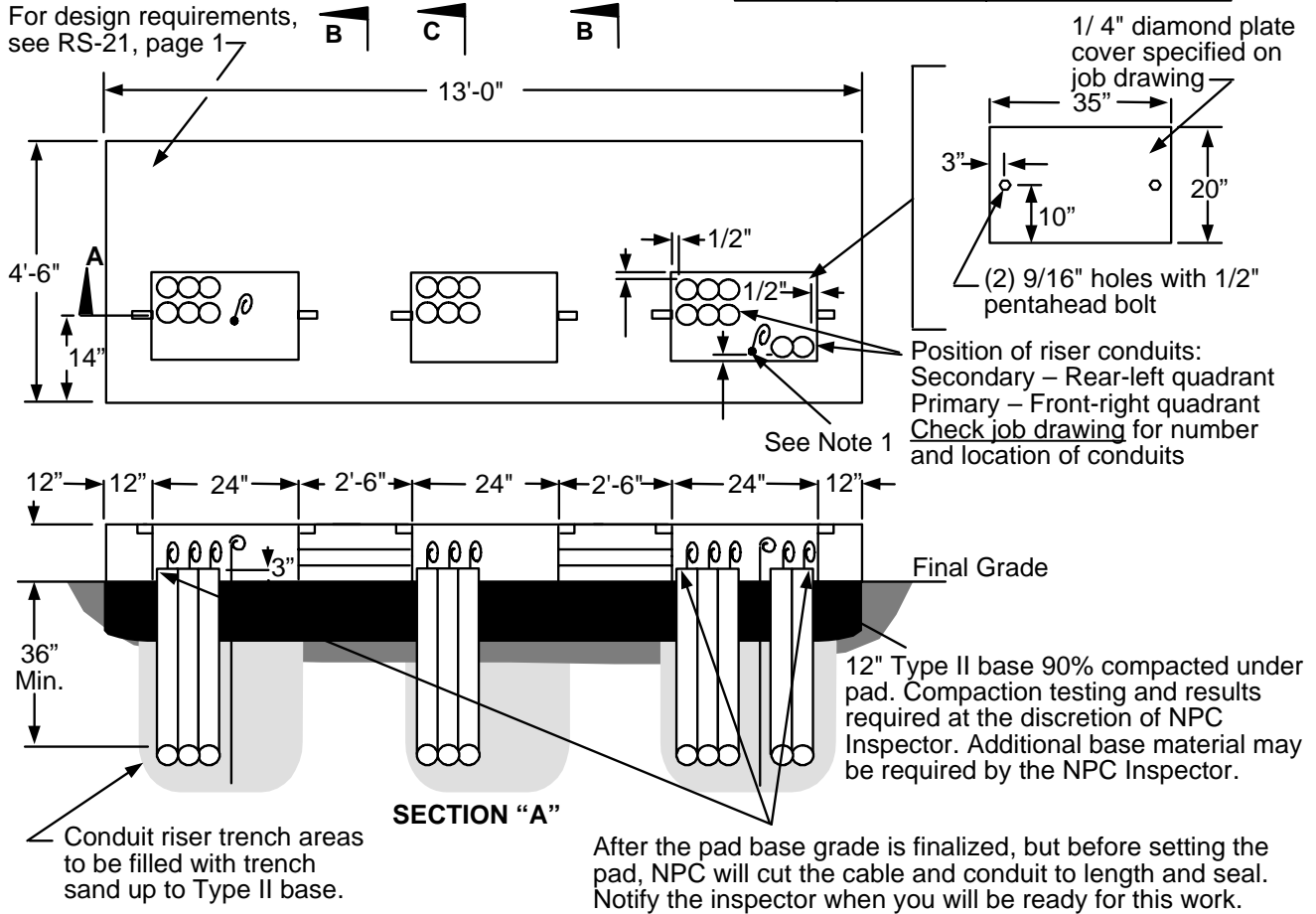
1. Rebar
 - A. Minimum #4
 - B. Placed into the above drawing according to the rebar schedule.
2. Mesh
 - A. Welded wire fabric 4x4-W4.0xW4.0, and 2'-0"x2'-0" square.
 - B. Placed between the two cable slots.
3. Pad
 - A. Two Unistruts hot dip galvanized steel type P2000HGx2-1/2".
 - B. Three 15"x24" cable slots.
 - C. Shall meet RS-G2 and RS-G3.

REV	REVISION RECORD	ENGR BY:	APPD BY:	DATE	T&D STANDARDS NEVADA POWER COMPANY ELECTRIC SERVICE REQUIREMENTS		
5					 RS-21 Commercial Transformer Pad Three 1Ph, 12 or 25 kv		
4							
3							
2							
1	New Format	DH	DA	12/06	DI: ESRNPC-RS021-REV01	NONE	INITIAL ISSUE DATE: 12/05/2006
						SHEET 1 OF 2	1

INSTALLATION REQUIREMENTS

APPROVED PRECAST PAD	
MANUFACTURER	PAD
Jensen Precast	J-RS-21
Rockway Precast	R-RS-21

For design requirements, see RS-21, page 1



NOTES:

1. Grounding by customer shall be 2-50' #2 stranded bare copper ground wires laid in the bottom of the conduit trench in opposite directions with 2-5' tails in the pad opening.
Note: Only at the discretion of NPC's inspectors, a 1/2"x8' copper ground rod can be installed.
2. For location and clearances to other structures, see RS-5.
3. Retaining wall required when grade from bottom of pad rises or lowers more than 1' in 5' horizontally.
4. Telephone and cable TV ground wires and clamps installed by them.
5. Sections "B" and "C" are for pour-in-place pads only.
6. The top of the pad shall be leveled and must clear the final grade by 12".

	T&D STANDARDS NEVADA POWER COMPANY ELECTRIC SERVICE REQUIREMENTS	
RS-21 Commercial Transformer Pad Three 1Ph, 12 or 25kV		
DI: ESRNPC-RS021-REV01	SHEET 2 OF 2	
SCALE: NONE	INITIAL ISSUE DATE: 12/05/2006	