

# RS-35: 3-PHASE TRANSFORMER PAD, 12/25KV, 75-300KVA @208V, 75-750KVA @480V

## DESIGN REQUIREMENTS

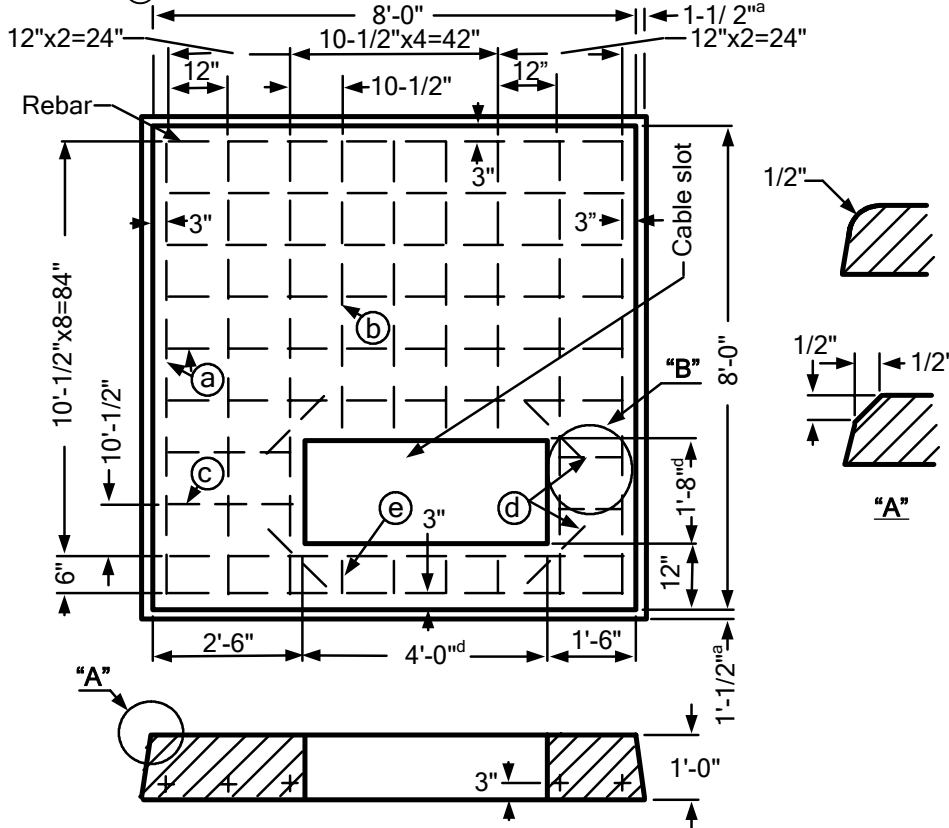
### TOLERANCES:

- a = +0", -1-1/2"
- b = +1/4", -0"
- c = +0", -1/4"
- d = +1/2", -0"

### REBAR SCHEDULE:

- (a) = 13 ea. 90"
- (b) = 4 ea. 58"
- (c) = 2 ea. 24"
- (d) = 6 ea. 12"
- (e) = 4 ea. 6"

APPROVED PADS	
MANUFACTURER	PAD
Jensen Precast	J-RS-35
Rockway Precast	R-RS-35

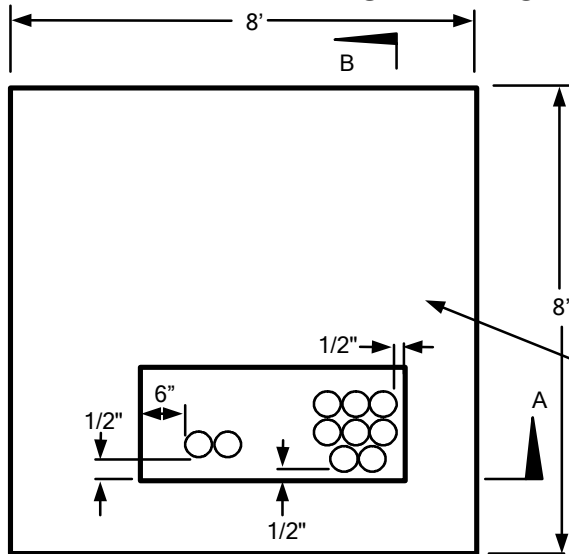


### RS-35, RS-40, AND RS-41 TRANSFORMER PADS

1. Rebar
  1. Minimum #4
  2. Placed into the above drawing according to the rebar schedule.
2. Pad
  1. A 20"x48" cable slot.
  2. Shall meet RS-G2 and RS-G3.
3. Only the RSI-36 Pad
  1. Two 2-1/2"x2-1/2"x1/4" min. x 66" hot dip galvanized steel angle.
  2. A 1" diameter PVC ell with a minimum radius of 5-3/4".
  3. A 1" diameter PVC coupling.

REV	REVISION RECORD	ENGR BY:	APPD BY:	DATE	T&D STANDARDS NEVADA POWER COMPANY ELECTRIC SERVICE REQUIREMENTS		
5	.	.	.	.	<b>RS-35 3Ø Transformer Pad 12/25KV</b> <b>75-300KVA @208V, 75-750KVA @480V</b>		
4	.	.	.				
3	.	.	.	.			
2	.	.	.	.			
1	New Format	DH	DA	10/06			
DI: ESRNPC-RS035-REV01					SHEET 1 OF 2		1
NONE					INITIAL ISSUE DATE: 11/6/2006		

# INSTALLATION REQUIREMENTS

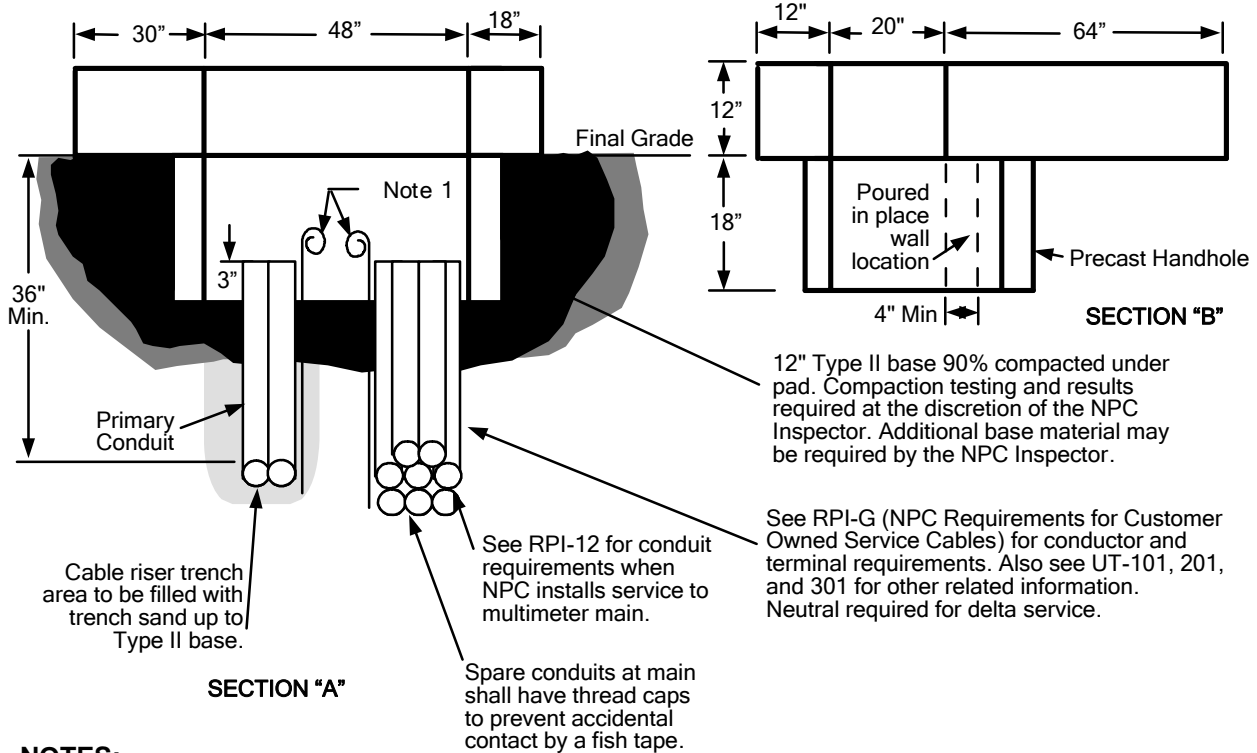


APPROVED PRECAST PAD	
MANUFACTURER	CATALOG NO.
Jensen Precast	J-RS-35
Rockway Precast	R-RS-35


APPROVED HANDHOLE 30" x 48" x 18"	
MANUFACTURER	CATALOG NO.
Jensen Precast	3048-18
Rockway Precast	R218

For design requirements, see RS-35, Page 1



**NOTES:**

- Grounding by customer shall be 2-50' #2 stranded bare copper ground wires laid in the bottom of the conduit trench in opposite directions with 2-50' tails in the pad opening.  
**Note:** Only at the discretion of NPC inspectors, a 1/2"x8' copper ground rod can be installed.
- For location and clearances to other structures, see RS-5.
- Retaining wall required when grade from bottom of pad rises or lowers more than 1' in 5' horizontally.
- All secondary conduits shall be located within 24" of the right side of the pad opening.
- The top of the pad shall be leveled and must clear the final grade by 12".

 <b>T&amp;D STANDARDS NEVADA POWER COMPANY ELECTRIC SERVICE REQUIREMENTS</b>	
<b>RS-35 3Ø Transformer Pad 12/25KV 75-300KVA @208V, 75-750KVA @480V</b>	
DI: ESRNPC-RS035-REV01	SHEET 2 OF 2
SCALE: NONE	INITIAL ISSUE DATE: 11/6/2006
