

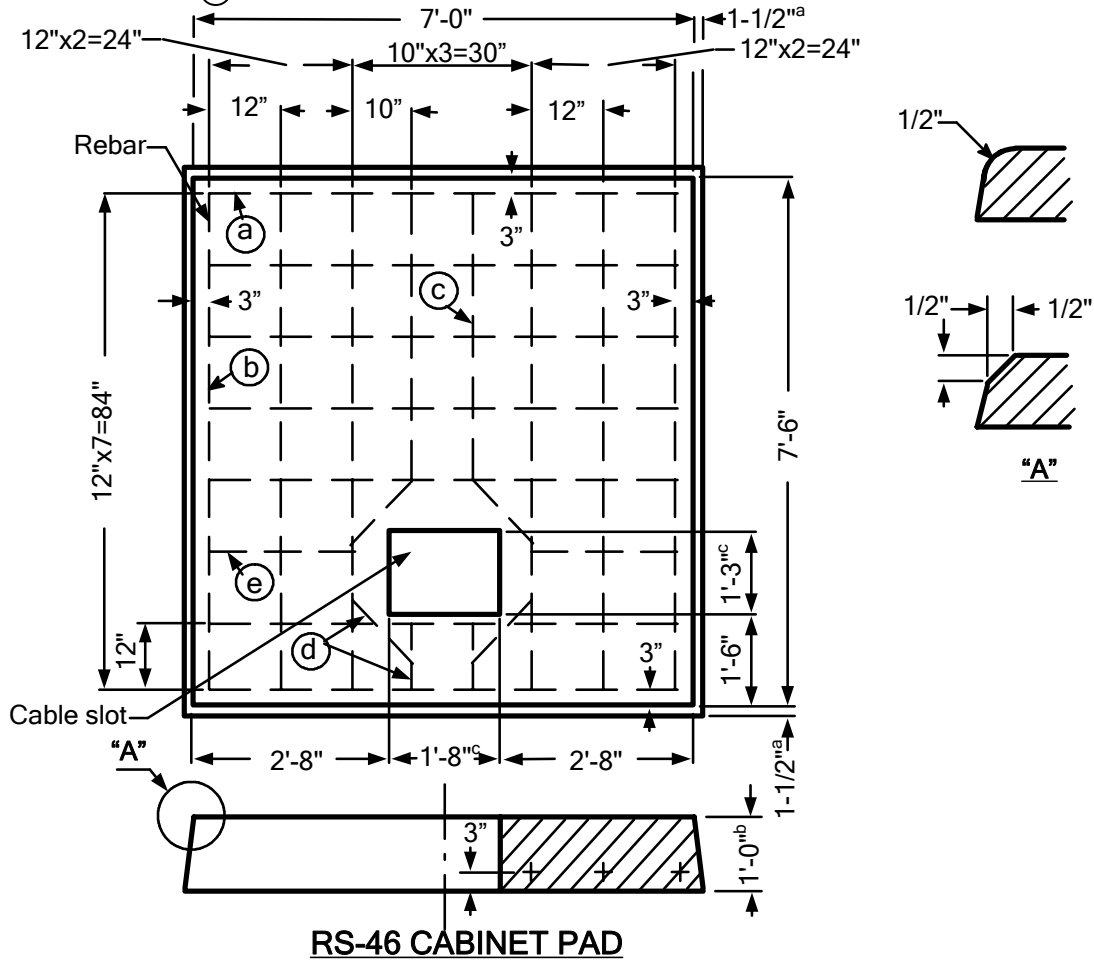
# RS-46: FUSE/METER CABINET PAD (15 & 25KV) AND CAPACITOR BANK PAD (12KV)

## DESIGN REQUIREMENTS

**TOLERANCES:**  
 a = +0", -1-1/2"  
 b = +1/4", -0"  
 c = +1/2", -0"

**REBAR SCHEDULE:**  
 (a) = 7 ea. 78"  
 (b) = 6 ea. 84"  
 (c) = 2 ea. 48"  
 (d) = 6 ea. 12"  
 (e) = 2 ea. 24"

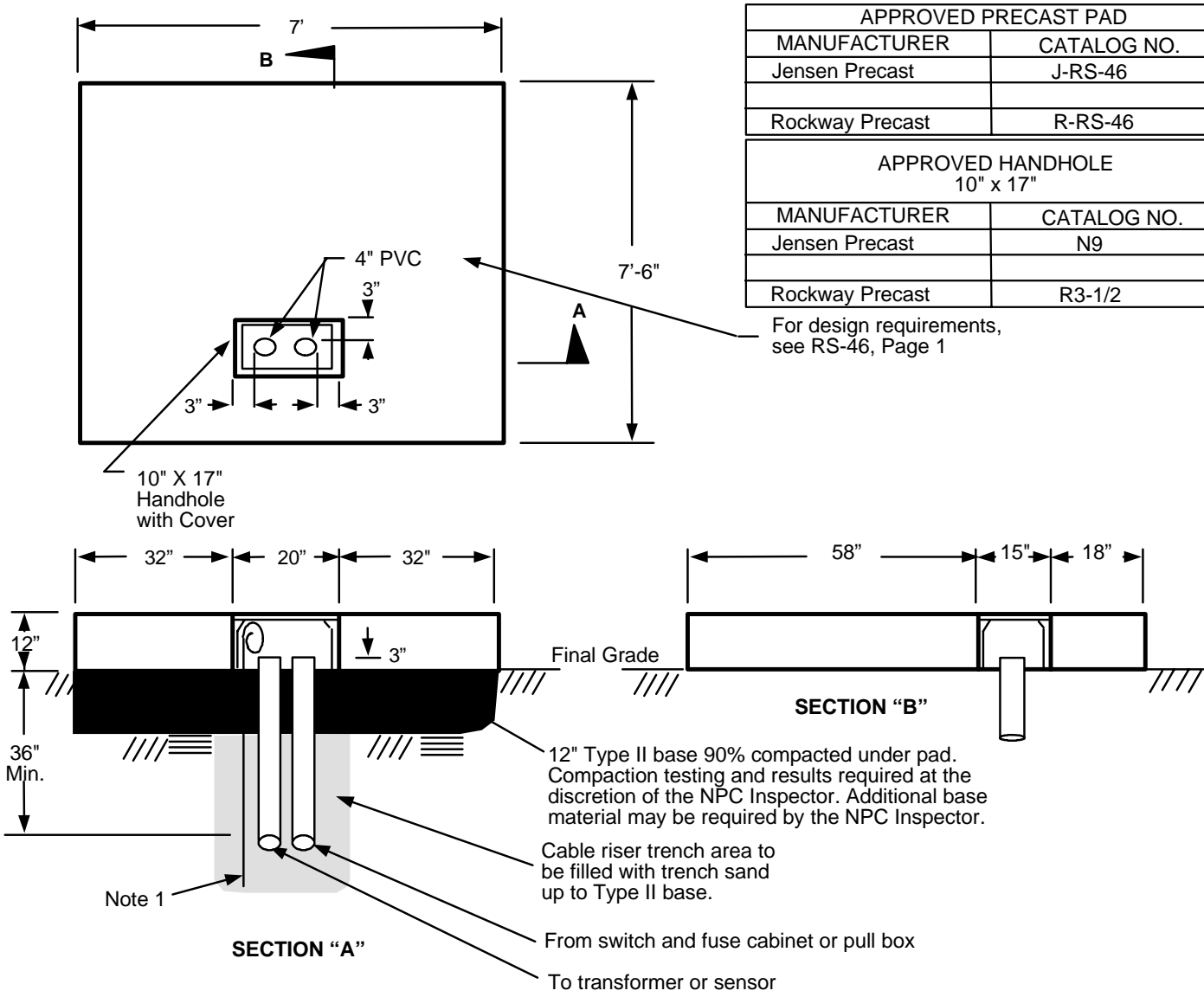
APPROVED PADS	
MANUFACTURER	PAD
Jensen Precast	J-RS-46
Rockway Precast	R-RS-46



1. Rebar
  - A. Minimum #4
  - B. Placed into the above drawing according to the rebar schedule.
2. Pad
  - A. A 15"x20" cable slot.
  - B. Shall meet RS-G2 and RS-G3.

REV	REVISION RECORD	ENGR BY:	APPD BY:	DATE	<b>T&amp;D STANDARDS NEVADA POWER COMPANY ELECTRIC SERVICE REQUIREMENTS</b>		
5	.	.	.	.	<b>RS-46 Fuse/Meter Cabinet Pad (15 &amp; 25kV) and Capacitor Bank Pad (12kV)</b>		
4	.	.	.				
3	.	.	.	.			
2	.	.	.	.			
1	New Format	DH	DA	10/06	DI: ESRNPC-RS046-REV01	NONE	INITIAL ISSUE DATE: 11/6/2006
						SHEET 1 OF 2	

# INSTALLATION REQUIREMENTS



APPROVED PRECAST PAD	
MANUFACTURER	CATALOG NO.
Jensen Precast	J-RS-46
Rockway Precast	R-RS-46

APPROVED HANDHOLE 10" x 17"	
MANUFACTURER	CATALOG NO.
Jensen Precast	N9
Rockway Precast	R3-1/2

For design requirements, see RS-46, Page 1

**NOTES:**

1. Grounding by customer shall be 2-50' #2 stranded bare copper ground wires laid in the bottom of the conduit trench in opposite directions with 2-5' tails in the pad opening.  
**Note:** Only at the discretion of NPC's inspectors, a 1/2" x 8' copper ground rod can be installed.
2. For location and clearances to other structures, see: RS-5.
3. Retaining wall required when grade from bottom of pad rises or lowers more than 1' in 5' horizontally.
4. All secondary conduits shall be located within 24" of the right side of the pad opening.
5. The top of the pad shall be leveled and must clear the final grade by 12".

<b>T&amp;D STANDARDS NEVADA POWER COMPANY ELECTRIC SERVICE REQUIREMENTS</b>	
<b>RS-46 Fuse/Meter Cabinet Pad (15 &amp; 25kV) and Capacitor Bank Pad (12kV)</b>	
DI: ESRNPC-RS046-REV01	SHEET 2 OF 2
SCALE: NONE	INITIAL ISSUE DATE: 11/6/2006